



MULTI-MODE, MULTI-DOMAIN SAR/MTI RADAR

Gather actionable intelligence using a high performance, airborne radar in all weather, day or night, for ground and maritime environments.

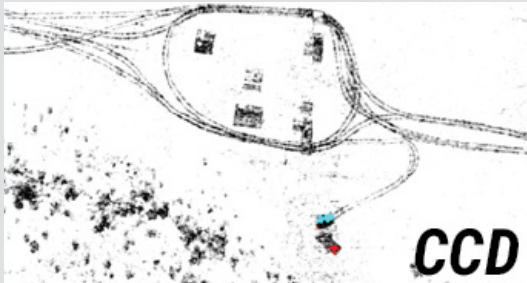
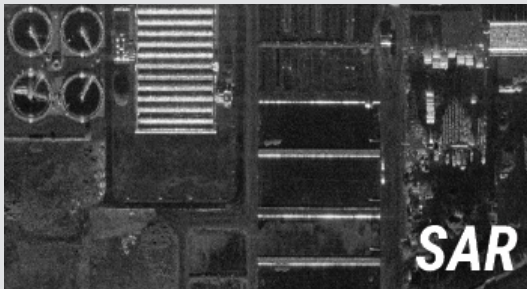


NSP-3

Designed to fly on Group 2-3 uncrewed airborne platforms and manned aircraft. Custom installations available.



CAPABILITIES



SYSTEM SPECIFICATIONS

SIZE (MODSAR CONFIGURATION)	MODSAR RADAR ELECTRONICS ASSEMBLY: 2U MOD PAYLOAD LENGTH: 6.6 IN (16.8 CM) WIDTH: 4.3 IN (10.9 CM) HEIGHT: 3.1 IN (7.7 CM)	ANTENNA POD: DIAMETER: 3.75 IN (9.5 CM) LENGTH: 30.6 IN (77.6 CM)
WEIGHT (MODSAR CONFIGURATION)	6.7 LBS (3.04 KG)	
POWER	81 W, 28 VDC	
FREQUENCY	KU	
TARGET PLATFORMS	GROUP 2-3 UAS	
RECOMMENDED MAINTENANCE INTERVAL	~1,250 HRS	
SENSOR CUEING	CURSOR ON TARGET	
COMMUNICATION	ETHERNET	
SERVER	GROUND PROCESSING SERVER REQUIRED (SIZE AND WEIGHT NOT INCLUDED IN SPECIFICATIONS ABOVE)	
COMMAND & CONTROL	LISA 3D™ AND RADAR CONTROL API	
IMAGE EXPLOITATION	LISA 3D™ OR EXISTING PED EQUIPMENT	
STANDARD DATA PRODUCTS	KML, COMPLEX NITF, JPG, PNG, BMP, STANAG 4607, STANAG 4676	
TRL	9	

PERFORMANCE DATA

SAR IMAGING	RESOLUTION	0.3 M	1 M
	MAX RANGE	10 KM	16 KM
MOVING TARGET INDICATOR VEHICLE	DETECTION AND TRACKING (GMTI)	7 KM	
MARITIME SURVEILLANCE	DETECTION AND GEOLOCATION (SAR)	104 NM (192 KM)	
	DETECTION AND TRACKING (MMTI)	41 NM (75 KM)	
	CLASSIFICATION (ISAR)	22 NM (40 KM)	
	MMTI MAX COVERAGE AT 50 KTAS	1,900 NM²/HR (6,500 KM²/HR)	

CAPABILITY VARIANTS

	NSP-3(S)
IMAGING	SAR
OPERATING MODES	STRIPMAP, SPOTLIGHT, WIDE AREA
CHANGE DETECTION	NON-COHERENT (MCD)

MOVING TARGET INDICATOR	VEHICLE TRACKING
MARITIME SURVEILLANCE	TRACKING, ISAR, SECTOR SCAN
RESOLUTION (METERS)	0.3, 0.5, 1, 2, 5, 10

APPLICATIONS

- Specialized ISR Missions
- Wildland Fire Monitoring
- Coastal Mapping
- Railroad Monitoring
- Counter-Narcotics
- Pipeline Monitoring
- Sea Ice Detection & Monitoring
- Search & Rescue
- Illegal Migrant Operations
- And More!



P. 801.798.8440
F. 801.798.2814

E. SALES@IMSAR.COM
W. WWW.IMSAR.COM

A. 940 S 2000 W #140
SPRINGVILLE, UT 84663